

## Phylogenetic relationships and divergence times of Charadriiformes genera: multigene evidence for the Cretaceous origin of at least 14 clades of shorebirds

Allan J Baker, Sérgio L Pereira and Tara A Paton

*Biol. Lett.* 2008 **4**, 762-763

doi: 10.1098/rsbl.2006.0606erratum

---

### Email alerting service

Receive free email alerts when new articles cite this article - sign up in the box at the top right-hand corner of the article or click [here](#)

---

To subscribe to *Biol. Lett.* go to: <http://rsbl.royalsocietypublishing.org/subscriptions>

---

## Erratum

Biol. Lett. 3, 205–209 (2007) (doi:10.1098/rsbl.2006.0606)

**Phylogenetic relationships and divergence times of Charadriiformes genera: multigene evidence for the Cretaceous origin of at least 14 clades of shorebirds**

Allan J. Baker, Sérgio L. Pereira and Tara A. Paton

On pages 206 and 207, some species names were printed incorrectly in figures 1 and 2. These figures appear correctly below.

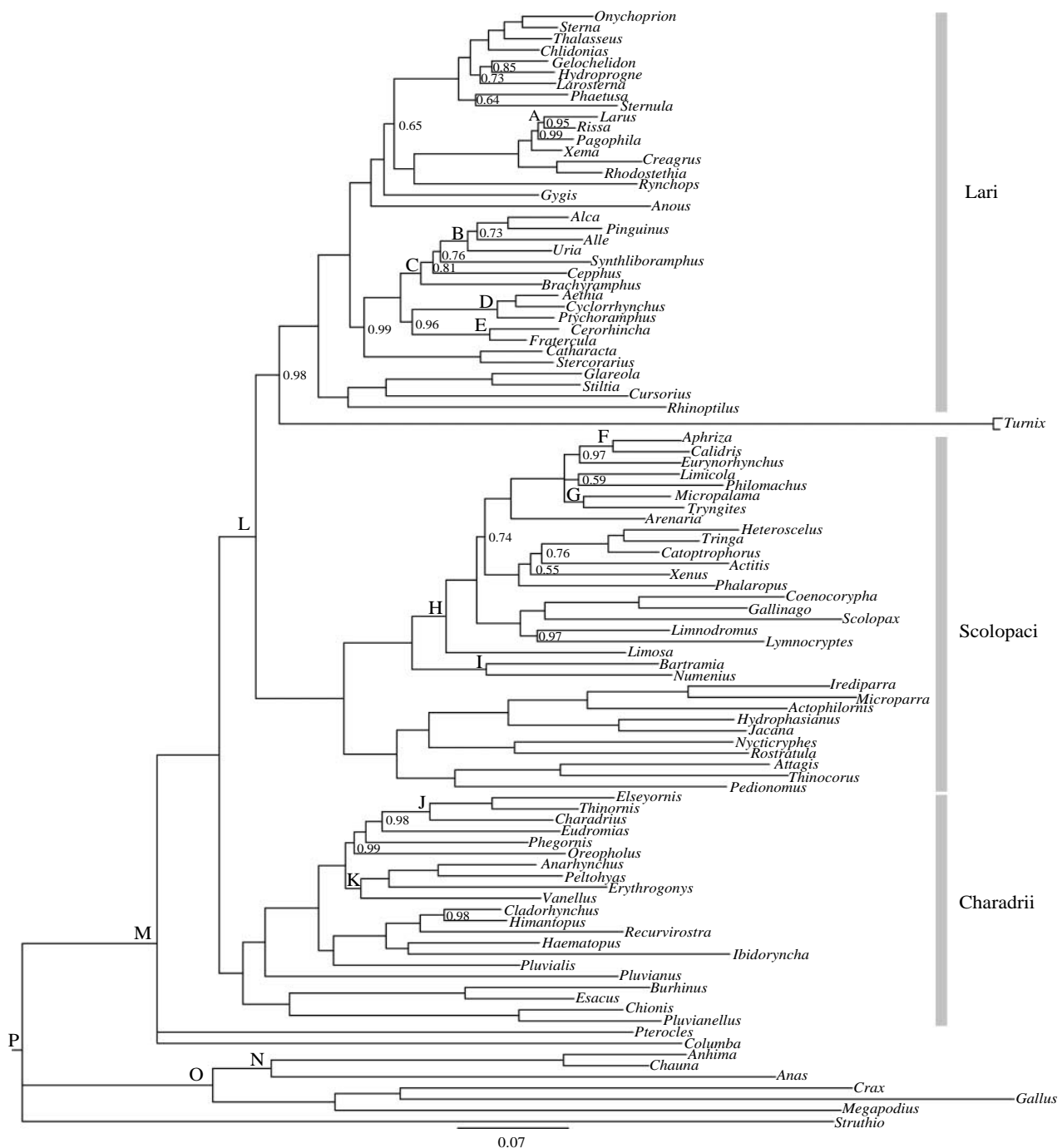


Figure 1.

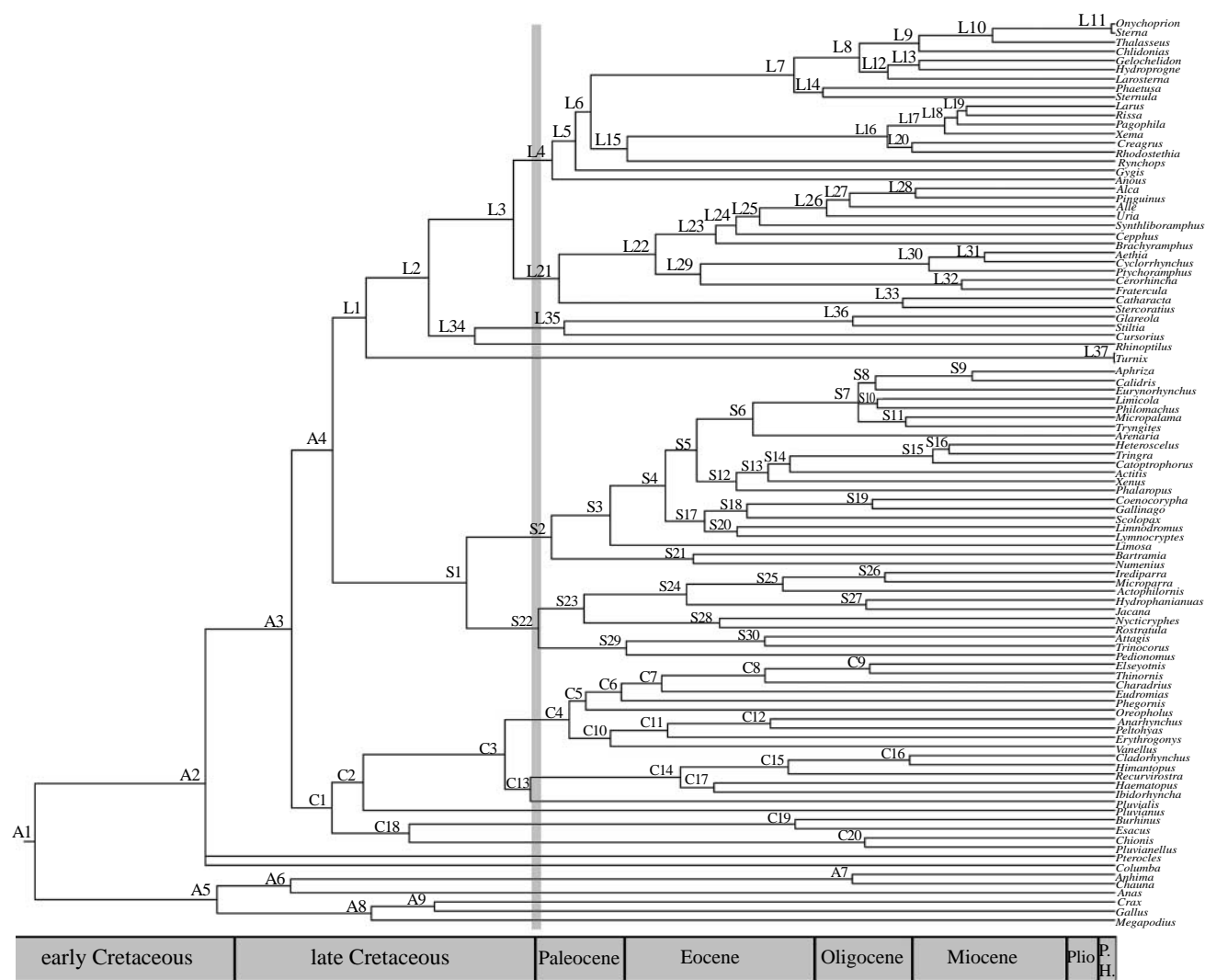


Figure 2.